

OxiPen® – pulse oximeter

ENVITEC
by Honeywell

Technical data

Measurement range

SpO ₂	0 to 100 %
Pulse frequency	20 to 300 BPM

Accuracy

Saturation	+/- 2 % (70 to 100 %); Sensor specific
Pulse frequency	+/- 1 BPM to 100 BPM +/- 1% >100 BPM

Batteries	2 x AAA ALKALINE
Capacity	>30 hrs
Operating temperature	0° to +45 °C
Storage temperature	-20° to +70 °C
Humidity	0 % to 90 % (non condensing)
Measurement process	Split pulse wave with Fuzzy Logic Control
Display	LCD with white backlighting and red, orange and green LED's. Indications of % SpO ₂ , pulse rate, signal quality, bar graph, battery status und sensor status
Pulse tone	Tone pitch variable (depending upon the measured O ₂ saturation)
Signal	Acoustic and visual signals Signal: on/off function with automatic deactivating after 3 min.
Dimensions (L X W x H)	32 x 136 x 24 mm
Weight	ca. 72 g with batteries
Classification	EN 60601-1
Protection system against electric shock	Protection class II
Degree of protection against electric shock	Type BF

Order information

Part number

OxiPen® pulse oximeter incl. FingerClip	1000155
OxiPen® pulse oximeter incl. SoftTip medium	1000159

EnviteC-Wismar GmbH
a Honeywell Company
Alter Holzhafen 18, 23966 Wismar, Germany
Phone: +49 (0) 3841 / 360-1
Phone: +49 (0) 3841 / 360-200 Sales
Fax: +49 (0) 3841 / 360-222

Internet: www.envitec.com
E-mail: info@envitec.com

ENVITEC
by Honeywell

Part-No. 058-33-00000001-a • 10/2007 • Technical information is subject to change without notice! © 2007 Honeywell International Inc.



The most versatile "patient to patient" pulse oximeter for spot checks and short term monitoring.

OxiPen® – pulse oximeter



Small in size – big in performance

Proven & trusted technology from EnviteC - the world leader in SpO₂ sensor technology.

OxiPen® - culmination of years of clinical experience, brings you the latest advantages for "patient to patient" SpO₂ monitoring.

The new generation electronics and extremely handy pocket- size oximeter design provide effective solution for spot check and short term monitoring.

Whenever a quick and reliable measurement of oxygen saturation is needed, OxiPen® delivers fast, precise and reliable support.

While small in size OxiPen® is big on performance, providing SpO₂, pulse rate, signal quality and pulse strength for all patient groups.

Superior quality

OxiPen® detects permanently the quality of the pulse signal for reliable measurement and presents continuously audible and visible signal tone for the pulse rate. The LED – pulse quality indicator provides easy-to see fast assessment of patient readings.

Additionally the separate displayed pulse-strength bar in-

dicates relative perfusion at the measurement site. Thus the integrated Artifact Leveling System –“AL”, OxiPen® secures the optimal measurement results without compromising accuracy, dynamics and artifact reliability in applications.

Patient to patient monitoring

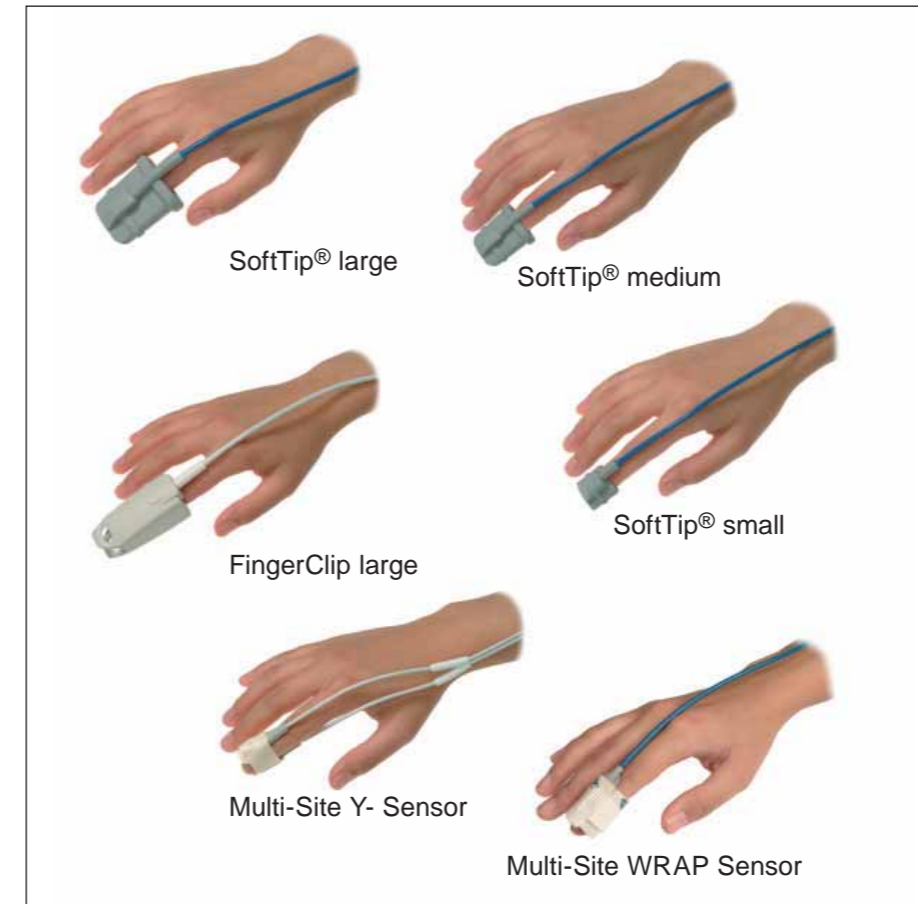
Versatility in application

The pulse oximeter OxiPen® offers you proven performance and ultimate versatility in application in EMS, hospital or clinical environments as well as in home use.

From pre and post operative monitoring, pulmonology, movement therapy, home care and transportation and everywhere in -between- the OxiPen® with its simple functionality with its small and ergonomic styling makes it a reliable partner for you.

The small and lightweight design makes it possible to carry OxiPen® anywhere in your pocket.

Scalable & flexible – SpO₂ sensor solutions



The special developed SpO₂ sensors for OxiPen® accommodate a wide range of extremities from pediatric to adult patients and meet your application needs while keeping high hygienic standards.

The OxiPen® is available with the following SpO₂ sensors:

- large finger SoftTip®
- medium finger SoftTip®
- small finger SoftTip®

To secure high hygienic standards and eliminate cross contamination risks during "patient to patient" monitoring, the fully encapsulated SoftTip® SpO₂ finger sensors make routine cleaning and disinfection easy and safe.

The SoftTip® SpO₂ finger sensors are compatible with most institutional cleaning solutions, including soap, alcohol and commercial disinfectants. You can choose the protection level you require.

EnviteC's quality SpO₂ sensors offer proven performance and well known durability in usage.

Easy-to-use

User-friendly two button operating interface coupled with large illuminated display with clearly presented informatio

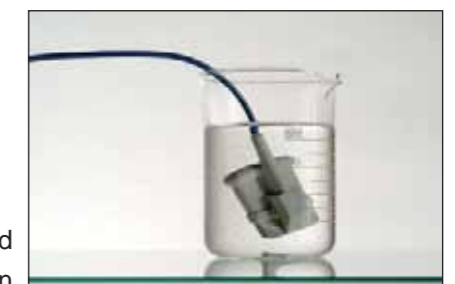
n secure comfortable support for the operating regardless of application needs.

OxiPen® provides beside sensor connection and low-battery indicator also automatic deactivating function after 3 minutes when not in use. It allows to provide 30 hours of continuous operation or approximately 3000 Spot checks at standard duration.

The proven performance combined with simple operation makes OxiPen® your reliable guide in "patient to patient" SpO₂ monitoring.



OxiPen®, relating connection and SoftTip® large



Easy cleaning and disinfection